

Palatine
concert band 

presents

Questions of Travel

Inspired by poems from Elizabeth Bishop
and Mary Oliver

Sunday, March 2, 2025

3:30 pm

Cutting Hall Performing Arts Center

Program

Wilson	<i>Shortcut Home</i> (2003)
Grainger	<i>Australian Up-Country Tune</i> (1930)
Colgrass	<i>Bali</i> (2006)
Smith	<i>Africa: Ceremony, Song, and Ritual</i> (1994)

INTERMISSION

Cuong	<i>Heart on Fire</i> (2022)
Schumann	“Träumerei” from <i>Kinderszenen</i> (1838)
Rossini	Overture to <i>The Italian Girl in Algiers</i> (1813)
Hisaishi	Selections from <i>My Neighbor Totoro</i> (1988)

This program is partially supported by a grant from the Illinois Art Council. The band acknowledges the Palatine Park District for their infrastructure support, printing support, and facility usage.



To receive information about upcoming concerts and events, scan the QR code to join our mailing list



Program Notes

American composer Dana Wilson completed *Shortcut Home* in 1998, for the Hillsboro (New Jersey) High School Band. Showcasing each section of the ensemble, this jazz-influenced fanfare hovers around the “home” of C Major for the entirety of the piece. This “home” tonality is implied from the work’s very first note, but is obscured and clouded throughout with dense harmony, changing meter, and surprising flourishes. Utilizing devices such as pitch bends, walking bass lines, and drum set patterns, Wilson creates a stylized and energetic “shortcut” toward the satisfying final note -- the only pure major triad to be found in the piece.



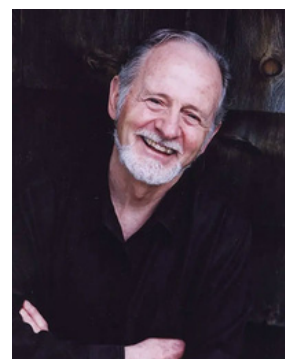
Dana Wilson
b. 1946

Australian Up-Country Tune was written by Percy Grainger for unaccompanied choir in 1928, and later arranged for concert band by Glenn Cliffe Bainum. Grainger states that his goal for this piece was to “voice Australian up-country feeling as Stephen Foster had with American country-side feelings in his songs.” The lyrical theme is played three times, increasing the textural complexity each time. Grainger used this same melody in other works with varying styles, including *Colonial Song* and *The Gumsuckers’ March*.



Percy Grainger
1882-1961

Bali is a composition for wind band inspired by the composer’s time living in Ubud, Bali, and is meant to reflect the musical styles and culture of the Balinese people. The percussion section uses pots and bowls of varying pitches unique to the Balinese gamelan percussion orchestra. The piece is divided into three sections: the first is a bright opening representing the dance-like rhythms of a gamelan orchestra, the second is a requiem for the fallen, and the final section builds from the lament into the upbeat dance rhythms of the beginning.



Michael Colgrass
1932-2019

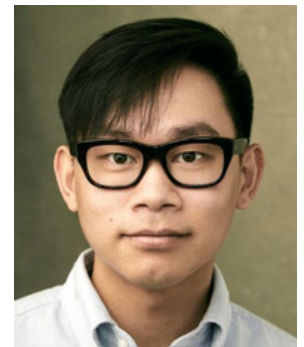
Program Notes

Robert W. Smith created *Africa: Ceremony, Song, and Ritual* as an homage to West African folk and ceremonial music. He aims to engage the listener in a wide range of emotions including joy, fear, hope, and grief. The Ceremony section is based on Oya “*Primitive Fire*” which depicts man’s conquest of fire. The Ghanaian folk song *Ancient Folk Song* represents the lush beauty of Ghana’s Gold Coast. The Ritual is in worship of the African God of Thunder, *Shango*, with a frenzied dance section culminating in a reprise of the opening melody. The piece is dedicated to and commissioned by the New Trier High School Band, Winnetka, IL.



Robert W. Smith
1958-2023

Inspired by Mary Oliver's poem *Walking to Oak-Head Pond*, and *Thinking of the Ponds I Will Visit in the Next Days and Weeks*, composer Viet Cuong has written *Heart on Fire* about hope in the face of hardship and living every day to the fullest. The piece was commissioned by the Western and Northwestern divisions of the College Band Directors National Association, and premiered at the CBDNA Western/Northwestern Conference in 2022.



Viet Cuong
b. 1990

Robert Schumann composed *Kinderszenen* (scenes from childhood) as a series of 13 pieces for piano, with “*Träumerei*” (dreaming/reverie) being the seventh piece in the series and one of Schumann’s most famous works. Schumann notes that these pieces are not for children, but rather for adults to remember the feelings of childhood. The dream-like feel of “*Träumerei*” is created by the use of rubato and an ambiguous tonal center throughout the piece. The Palatine Concert Band dedicates this performance to the memory of Margaret A. Lowe.



Robert Schumann
1810-1856

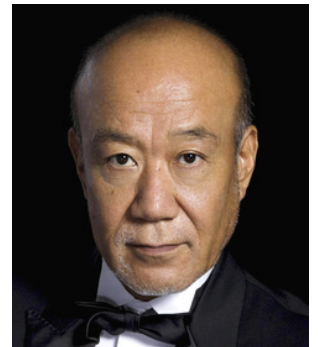
Program Notes

While Rossini's 1813 opera, *The Italian Girl in Algiers*, is not frequently programmed today, Lucien Cailliet's band arrangement of the overture is still widely performed and recorded. The overture begins with a slow, quiet introduction, punctuated by a sudden loud burst from the full ensemble. This "surprise" is thought to be an homage to one of Rossini's earliest influences, Franz Joseph Haydn's *Symphony No. 94 in G Major*, "The Surprise Symphony." The remainder of the overture is a fast-paced race to the finish which generates the excitement that Rossini is known for.



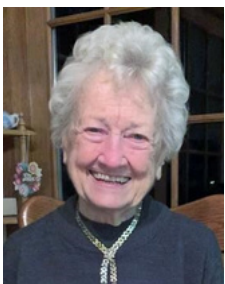
Gioachino Rossini
1792-1868

My Neighbor Totoro is a Japanese animated fantasy film about two young girls and their interactions with friendly wood spirits in postwar rural Japan. Arranger Yo Goto writes that he was inspired by the film's "portrait of family love, respect for the environment, exciting adventures of childhood, and people's loving kindness." His arrangement intends to weave the six selections into one complete story, instead of six pieces of scenes. The six selections in this arrangement are *Stroll*, *The Village in May*, *Traveling Soot*, *The Path of Wind*, *Catbus*, and *My Neighbor Totoro*.



Joe Hisaishi
b. 1950

In Memoriam



The Palatine Concert Band honors the memory of Ms. Ruthanne G Johnson, who passed away on December 15, 2024. Ruthanne was a member of the Palatine Concert Band clarinet section for many years. This performance is dedicated to her memory.

Conductor



Dr. Frederick Lowe became the twelfth conductor of the Palatine Concert Band in 2013. He is a Senior Lecturer at Loyola University Chicago where he serves as Director of the Music Program. In addition, he conducts the Wind Ensemble and the Commencement Wind Ensemble, prepares the pit orchestra for the spring musical, coordinates the athletic bands, and teaches courses in the art of music listening, introductory conducting, and applied conducting.

Dr. Lowe earned his Bachelor of Music degree at the University of Michigan in Ann Arbor, studying clarinet with Deborah Chodacki, and serving as a graduate assistant with the Michigan Marching Band. He then became assistant band director at Lake Zurich (IL) High School, where he directed the concert, symphonic, and marching bands and taught music theory and electronic music composition. Upon leaving Lake Zurich, he earned his Master and Doctor of Music degrees in conducting at Northwestern University, studying with primary teacher Mallory Thompson. While at Northwestern, Dr. Lowe guest-conducted the Contemporary Music Ensemble, Concert Band, Symphonic Band, and Symphonic Wind Ensemble. He also assisted with the “Wildcat” Marching Band and the men’s basketball pep band. Dr. Lowe has participated in conducting symposia with conductors including H. Robert Reynolds, Jerry Junkin, Larry Rachleff, Craig Kirchoff, Rodney Winther, John Whitwell, and Allan McMurray.

Dr. Lowe has traveled to Singapore, where he spent three weeks working as a music clinician in five public schools and appeared as a guest conductor with the Singapore Festival Winds. He served as a guest conductor with the McHenry County (IL) Youth Orchestras, and has judged several music festivals in the Chicago area. His music analyses have been published in the GIA Publications series *Teaching Music Through Performance In Band*, in Volume VI, the revision of Volume I, the volume highlighting solos with wind ensemble accompaniment, and the first volume of music for middle school band.

Dr. Lowe holds memberships in the College Music Society, the College Band Directors National Association, the National Association for Music Education, Kappa Kappa Psi, and Tau Beta Sigma.

Performers

FLUTE

Amy Burke +
Joan Entwhistle
Jennifer Green
Diane Hansen
Grace Horner
Alysse Hunter
Scott Morlock
Jill Polites
Laurel Rector
Mark Wilhelm
Carin Zachar* +

OBOE

Danielle Anderson*
Joe DeMaria

BASSOON

Rachel Schoeneman
Jay Virchow*

*Section Principal
+Board Member

CLARINET

Crystal Bertolami
Lisa Bordelon
Larry Brown
Madison Guthrie
Mike Kahles
Nancy Mueller*
Jim Norris
Carol Pinson
Shannon Radley +
Jan Romanowski

BASS CLARINET

Jim Pinson*
Dan Sorce*
Jan Van Cleave

SAXOPHONE

Victor Amaro
Bonnie Briggs
Joe DiCiaula
Judyann Reis
Karen Stein*

Andrew Wagner

TRUMPET

Sam Agnello
Michele Cornelius
Sean Grinsell
Jack Kelly
Rick LoPresto* +
Ralph Nicksarlian
Steve Pattengale
Piper Quaschnick
Ryan Stites +

HORN

John Baumgart* +
David Eterno
Johanna Johnson
Stuart McCrorie
Aliza Reitsma
Christine Schyvinck
Kris Tsau

TROMBONE

Steve Amblad
Crystal Ekstrom
Jason Girard*

TROMBONE (continued)

Kristen Hahn
Jennie Hecht
James Meek
Dan Rogers

EUPHONIUM

Jeff Cook
Alex Rivera*

TUBA

Mark Boekenhauer*
Dylan Propheter
Brian Smith

PERCUSSION

Eric Bachmann
Felix Desposorio
Holly Greb
Zuwa Igiehon
Elise Matussek
Jessica S. McGinnis
Hailey Williams
Steven Zachar

Organization

President	Carin Zachar
Vice President	Micheala Tuminello
Asst Conductor	Rick LoPresto
Treasurer	Susan Shearin
Secretary	Alice Merrill
Historian	Alysse Hunter
Librarian	Rick LoPresto, Dan Sorce
Personnel	Amy Burke

Concert Flyer	John Baumgart
Program	Lisa Bordelon
Rehearsal Setup	Dan Rogers
Social Media	Sam Agnello, Jason Girardi, Shannon Radley
Stage Manager	Dan Sorce
Ushers	Bob Green, Rose Kundich
Website/IT	Jim Meek, Victor Amaro

About the Palatine Concert Band

The Palatine Concert band was formed in 1875, as the Palatine Military Band. After a period of dormancy in the early 20th century, local musicians revitalized the ensemble as the Palatine Village Band for the 1955 Centennial Parade. The band has performed regularly ever since.

The Palatine Concert Band rehearses every Tuesday in the Palatine Community Center and performs eight concerts annually. Membership is open to adult musicians, subject to audition and vacancy. Palatine Concert Band does not discriminate on the basis of disability in admission, access to or employment in its programs and activities. Visit us on Facebook, Instagram, and www.palatineconcertband.org.

Friends of the Band

The Palatine Concert Band is a 501(c)(3) non-profit educational organization. Donations from patrons like you help sustain our ability to perform, grow, and connect through music. Whether you're a lifelong fan or new to our performances, your support ensures we can keep creating unforgettable experiences. Please scan the QR code to the right to make a contribution.



The band appreciates regular financial support from **Michael Labowicz** and **Don Malin**.

Upcoming Performances

Sunday, April 27	3:30 pm	Cutting Hall PAC, Palatine
Wednesday, June 4	7:30 pm	Fred P. Hall Amphitheater, Palatine
Wednesday, June 25	7:30 pm	Fred P. Hall Amphitheater, Palatine
Friday, July 4	7:30 pm	Lagoon at Dawes Park, Evanston
Wednesday, July 16	7:30 pm	Fred P. Hall Amphitheater, Palatine